

Accommodation Information

Hotels overview

No	Hotel name	Hotel category
1	Parnas Hotel Jeju	★★★★★
2	Booyoung Hotel	★★★★
3	YOU US Hotel	★★★
4	Bloom Hotel	★★★
5	Aria Hotel	★★★
6	Bridge Residence	★★★
7	Hotel Bareve Hotel	★★★

Hotel Info ①



Parnas Hotel Jeju

Parnas Hotel Jeju ★★★★★

- Address 100, Jungmungwangwang-ro 72, Seogwipo city, Jeju Province
- Contact +82-64-801-5555
- Homepage <https://www.parnashoteljeju.com>

<<Public Transportation>>

- ① Jeju Airport ↔ Parnas Hotel Jeju (40km)
 - ▶ Airport Bus #600
 - First 6:00, Last 22:40 / Every 18-20 min.
 - Travel Time 70 min. • Bus Fare KRW 4,500
- ② IUCN Leaders Forum venue, ICC JEJU ↔ Parnas Hotel Jeju (2.9km)
 - ▶ City Bus #510, Airport Bus #600
 - Travel Time 10 min. • Bus Fare KRW 1,100-2,000

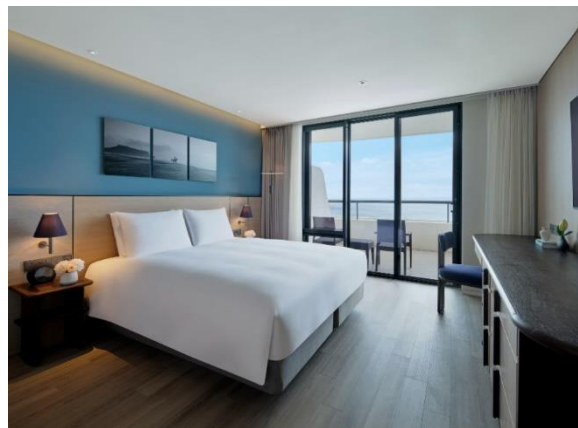
Hotel Info ①

Parnas Hotel ★ ★ ★ ★ ★

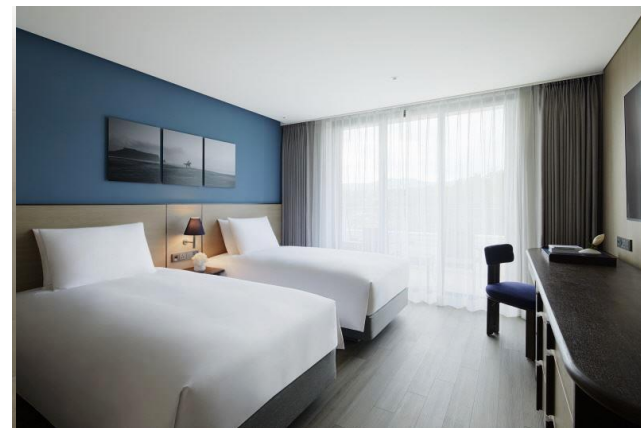
Deluxe King Room Size: 37 m² (Bed Room, Bathtub, Balcony)

Room Type	Occupancy	Special Rate (Including VAT)				
		Oct.12	Oct.13	Oct.14	Oct.15	Breakfast
Deluxe King/Twin	2 people	KRW 363,000 / per night			KRW 48,400 / per person	

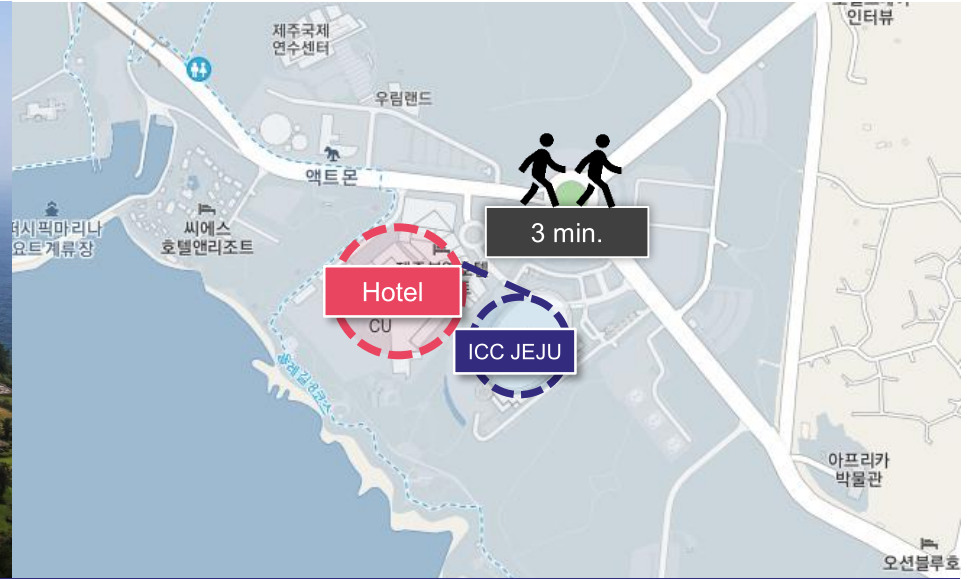
▶ Room Pictures



- Bed Type : 1 King bed



- Bed Type : 2 Single beds



Booyoung Hotel & Resort

Booyoung Hotel & Resort ★★☆☆

- Address 222, Jungmungwangwang-ro, Seogwipo city, Jeju Province
- Contact +82-64-731-5500
- Homepage <http://www.booyoungjejuhotel.com>

General Information

- **Check-in** 15:00 pm / **Check-out** 11:00 pm
- Breakfast
1F Restaurant 07:00-10:00

<<Public Transportation>>

- ① Jeju Airport ↔ Booyoung Hotel & Resort (42km)
 - ▶ Airport Bus #600
 - First 6:00, Last 22:40 / Every 18-20 min.
 - Travel Time 73min. • Bus Fare KRW 4,500
 - ※ Bus Stop: **International Convention Center Jeju**
- ② IUCN Leaders Forum venue, ICC JEJU ↔ Booyoung Hotel & Resort (0.5km)

Hotel Info ②

Booyoung Hotel ★ ★ ★ ★

Deluxe Twin Room Size: 39.6 m² (Bed Room, Bathtub, Balcony)

Room Type	Occupancy				
		Oct.13	Oct.14	Oct.15	Breakfast
Deluxe Twin	2 people	KRW 150,000	KRW 180,000	KRW 180,000	KRW 27,000 / per person

▶ Room Pictures



- Bed Type: 1 Semi double bed(140 cm×200 cm), 1 Single bed(110 cm×200 cm)



YOU US Hotel

YOU US Hotel ★★ ★

- Address 178-21, Cheonjeyeon-ro, Seogwipo city, Jeju Province
- Contact +82-64-733-7500
- Homepage <https://youushotel.modoo.at>

General Information

- **Check-in** 15:00 pm / **Check-out** 11:00 pm
- Breakfast
1F Restaurant 07:00-10:00

<<Public Transportation>>

- ① Jeju Airport ↔ YOU US Hotel (41km)
 - ▶ Airport Bus #600
 - First 6:00, Last 22:40 / Every 18-20 min.
 - Travel Time 96 min. • Bus Fare KRW 4,500
 - ※ Bus Stop: **International Convention Center Jeju**
 - ▶ Express Bus #182
 - First 6:35, Last 22:30 / Every 40 min.
 - Travel Time 67 min. • Bus Fare KRW 3,000
 - ※ Bus Stop: **Jungmun Post Office**
- ② IUCN Leaders Forum venue, ICC JEJU ↔ YOU US Hotel (1.4km)

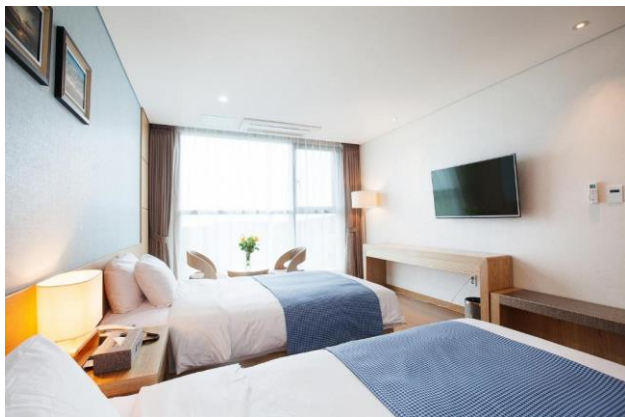
Hotel Info ③

YOU US Hotel ★ ★ ★

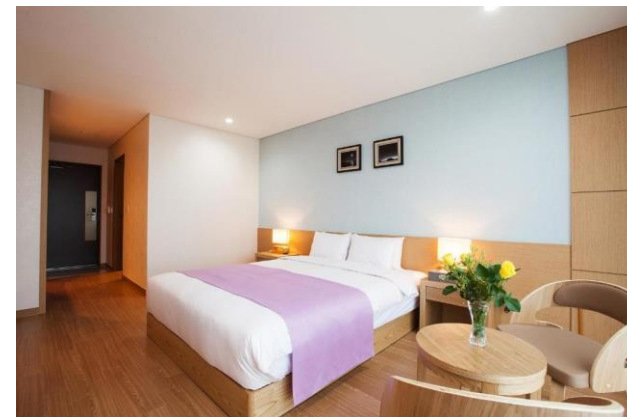
Hotel Deluxe Room Size: 26.4 m² (Bed Room, Shower Booth)

Room Type	Occupancy	Special Rate (Including VAT)				
		Oct.12	Oct.13	Oct.14	Oct.15	Breakfast
Deluxe Double/Twin	2 people	KRW 70,000 / per night			KRW 8,000 / per person	

▶ Room Pictures



- Bed Type : 2 Super single beds



- Bed Type: 1 Double bed

Hotel Info ③

YOU US Hotel ★ ★ ★

Triple Room Size: 26.4 m² (Bed Room, Shower Booth)

Room Type	Occupancy	Special Rate (Including VAT)				
		Oct.12	Oct.13	Oct.14	Oct.15	Breakfast
Triple	Up to 3 people	KRW 90,000 / per night			KRW 8,000 / per person	

▶ Room Pictures



-Bed Type : 3 Super single beds

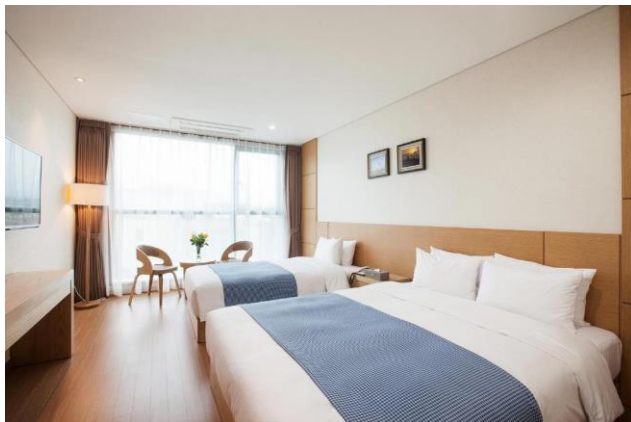
Hotel Info ③

YOU US Hotel ★ ★ ★

Hotel Deluxe Family Room Size: 26.4 m² (Bed Room, Shower Booth)

Room Type	Occupancy	Special Rate (Including VAT)				
		Oct.12	Oct.13	Oct.14	Oct.15	Breakfast
Deluxe Family Twin	Up to 3 People	KRW 80,000 up to 2 people / per night KRW 90,000 up to 3 people / per night			KRW 8,000 / per person	

▶ Room Pictures



-Bed Type : 1 Super single bed + 1 Double bed

Hotel Info ③

YOU US Hotel ★ ★ ★

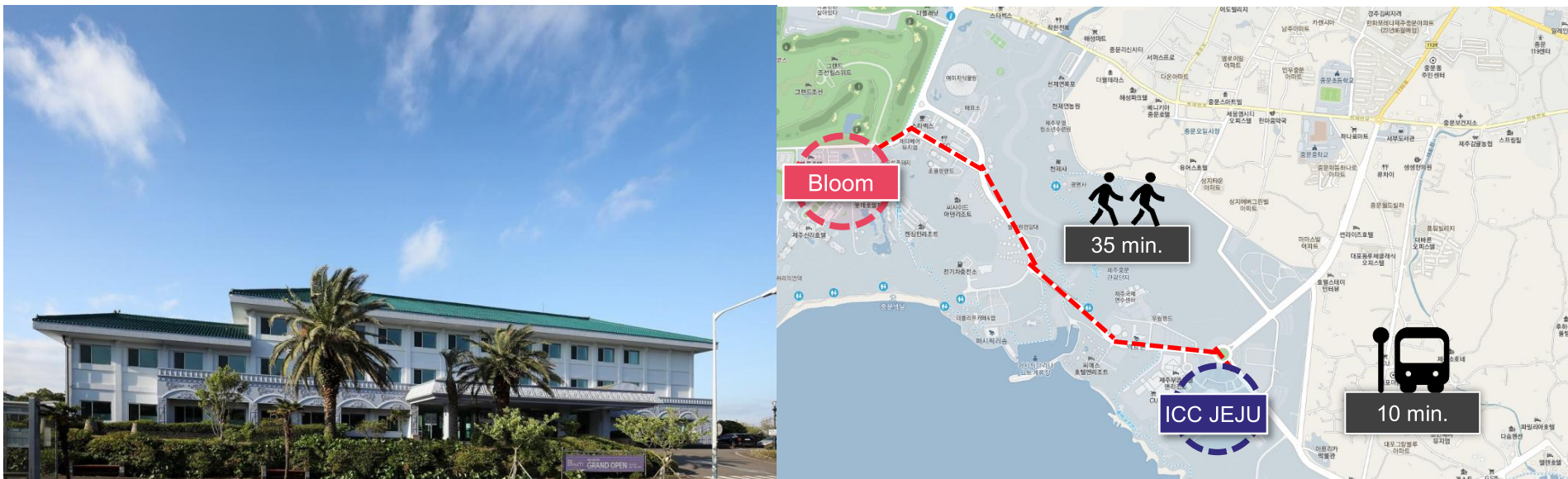
Suite Corner Room Size: 39.6 m² (Bed Room, Shower Booth)

Room Type	Occupancy	Special Rate (Including VAT)				
		Oct.12	Oct.13	Oct.14	Oct.15	Breakfast
Suite Corner	Up to 4 people	KRW 85,000 up to 2 people / per night KRW 95,000 up to 3 people / per night KRW 105,000 up to 4 people / per night			KRW 8,000 / per person	

▶ Room Pictures



-Bed Type : 2 Queen beds



Bloom Hotel

Bloom Hotel ★★ ★

- Address 72-53, Jungmungwangwang-ro, Seogwipo city, Jeju Province
- Contact +82-64-738-7000
- Homepage <http://suites.co.kr/Bloom>

General Information

- **Check-in** 15:00 pm / **Check-out** 11:00 pm
- Breakfast
B1F Restaurant 07:00-10:00

<<Public Transportation>>

- ① Jeju Airport ↔ Bloom Hotel (40km)
 - ▶ Airport Bus #600
 - First 6:00, Last 22:40 / Every 18-20 min.
 - Travel Time 72 min. • Bus Fare KRW 4,500
 - ※ Bus Stop: **Grand Josun Jeju**
- ② IUCN Leaders Forum venue, ICC JEJU ↔ Bloom Hotel (2.3km)
 - ▶ City Bus #510, #690
 - Travel Time 10 min. • Bus Fare KRW 1,150
 - ※ Bus Stop: **Jungmun Golf Course**

Hotel Info ④

Bloom Hotel ★ ★ ★

Hotel Deluxe

Room Size: 23.1 m²

Room Type	Occupancy	Special Rate (Including VAT)				
		Oct.12	Oct.13	Oct.14	Oct.15	Breakfast
Deluxe Double	2 people	KRW 70,000 / per night			Included (1 person)	
Deluxe Twin	2 people	KRW 85,000 / per night			Included (1 person)	

▶ Room Pictures



- Bed Type : 1 Double bed



- Bed Type: 2 Double beds

Hotel Info ④

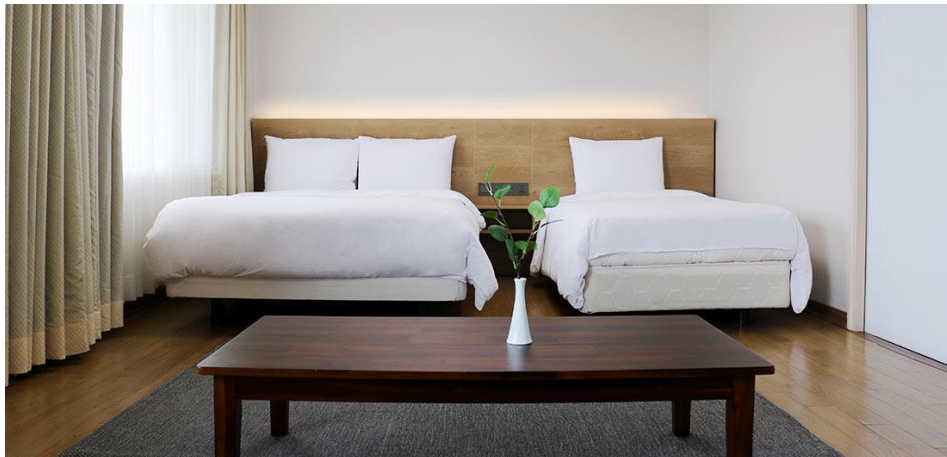
Bloom Hotel ★ ★ ★

Hotel Family

Room Size: 46.2 m²

Room Type	Occupancy	Special Rate (Including VAT)				
		Oct.12	Oct.13	Oct.14	Oct.15	Breakfast
Family Complex	Up to 4 people	KRW 110,000 / per night			Included (1 person)	

▶ Room Pictures



- Bed Type : 1 Double bed, 1 Single bed

Hotel Info ④

Bloom Hotel ★ ★ ★

Hotel Family Room Size: 46.2m² (2 Rooms)

Room Type	Occupancy	Special Rate (Including VAT)				
		Oct.12	Oct.13	Oct.14	Oct.15	Breakfast
Family Triple	Up to 4 people	KRW 120,000 / per night			Included (1 person)	

▶ Room Pictures



- Bed Type : 3 Double beds



Aria Hotel

Aria Hotel ★ ★ ★

- Address 2508 Saekdal-dong, Seogwipo city, Jeju Province
- Contact +82-64-738-8981
- Homepage <https://aria-hotels.co.kr>

General Information

- **Check-in** 15:00 pm / **Check-out** 11:00 pm
- **Breakfast NOT Provided**

<<Public Transportation>>

- ① Jeju Airport ↔ Aria Hotel (39km)
 - ▶ Airport Bus #600
 - Travel Time 70 min. • Bus Fare KRW 4,500
 - ※ Bus Stop: **Jungmun Resort Entrance**
- ② IUCN Leaders Forum venue, ICC JEJU ↔ Aria Hotel (2.5km)
 - ▶ City Bus #520, #521 • Bus Fare KRW 1,150
 - ※ Bus Stop: **Jungmun Tourist Complex**
 - ▶ Airport Bus #600 • Bus Fare KRW 1,300
 - ※ Bus Stop: **Jungmun Resort Entrance**

Hotel Info ⑤

Aria Hotel ★ ★ ★

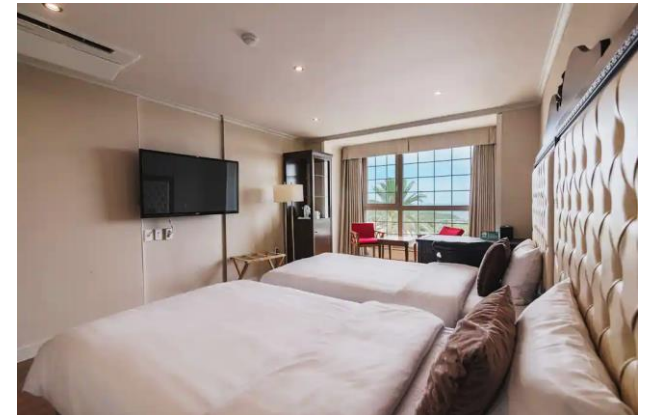
Hotel Standard Room Size: 36m² (Bed Room, Bathtub)

Room Type	Occupancy	Special Rate (Including VAT)				
		Oct.12	Oct.13	Oct.14	Oct.15	Breakfast
Standard King / Twin	2 people	KRW 95,000 / per night			Not provided	

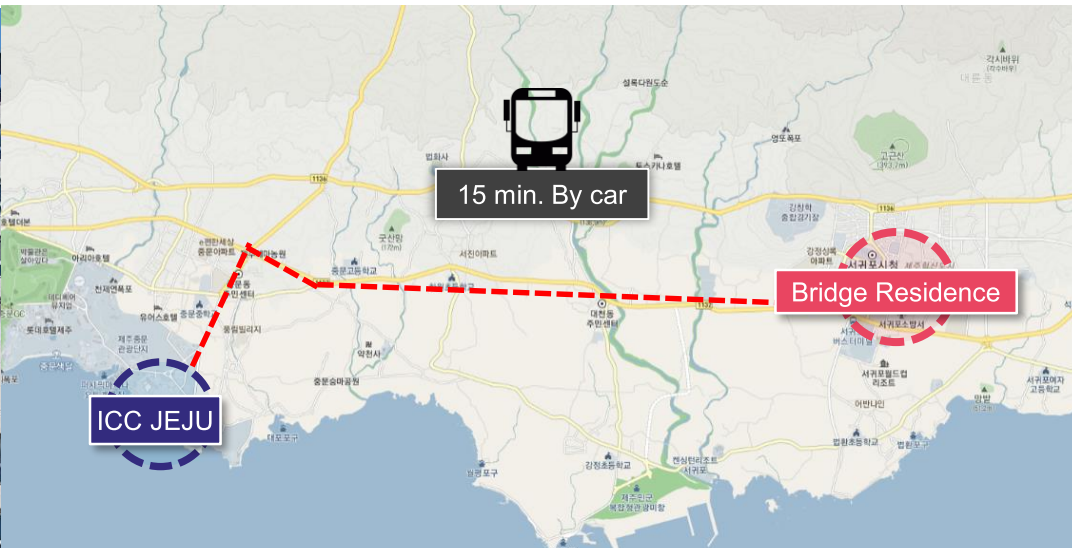
▶ Room Pictures



- Bed Type : 1 King bed



- Bed Type: 1 Double bed, 1 Single bed



Bridge Residence Hotel

Bridge Residence Hotel ★★ ★

- Address 49, Gimjeongmunhwa-ro, Seogwipo city, Jeju Province
- Contact +82-64-738-7707
- Homepage <http://www.bridgeresidencehotel.com>

General Information

- **Check-in** 15:00pm / **Check-out** 11:00pm
- **Breakfast NOT Provided**

<<Public Transportation>>

- ① Jeju Airport ↔ Bridge Residence Hotel (48km)
 - ▶ Airport Bus #800, #800-1
 - Travel Time 60 min. • Bus Fare KRW 5,000
 - ※ Bus Stop: **Seogwipo Post Office**
 - ▶ Airport Bus #600
 - Travel Time 110 min. • Bus Fare KRW 5,000
 - ※ Bus Stop: **Jeju World Cup Stadium**
- ② IUCN Leaders Forum venue, ICC JEJU ↔ Bridge Residence Hotel (9.1km)
 - The shuttle service will be provided

Hotel Info ⑥

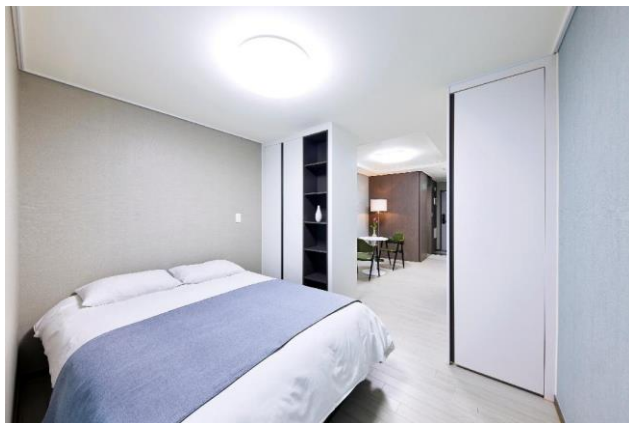
Bridge Residence Hotel ★★ ★

Hotel Deluxe

Room Size: 30m²

Room Type	Occupancy	Special Rate (Including VAT)				
		Oct.12	Oct.13	Oct.14	Oct.15	Breakfast
Standard Double	2 people	KRW 38,000 / per night				Not Provided
Deluxe Twin	Up to 3 people	KRW 48,000 / per night				
Deluxe Double	2 people	KRW 52,000 / per night				

▶ Room Pictures



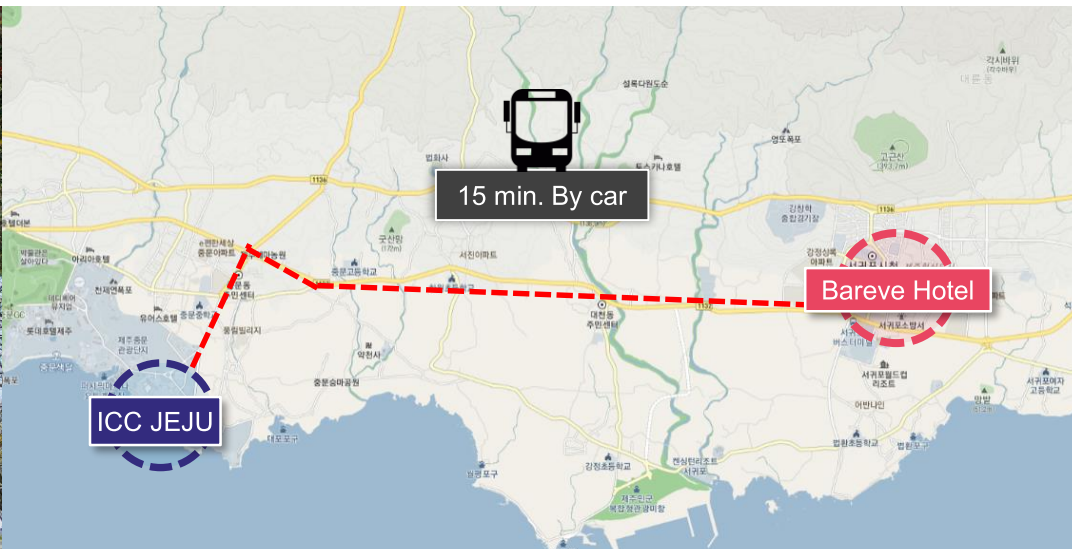
- Bed Type : 1 Double bed



- Bed Type: 1 Double bed, 1 Single bed



- Bed Type: 1 Double bed



Bareve Hotel

Bareve Hotel ★ ★ ★

- Address 15, Gimjeongmunwha-ro, Seogwipo city, Jeju Province
- Contact +82-64-735-8899
- Homepage <http://www.barevehotel.com>

General Information

- **Check-in** 15:00 pm / **Check-out** 11:00 pm
- **Breakfast**
1F Restaurant 07:00-09:30

<<Public Transportation>>

- ① Jeju Airport ↔ Bareve Hotel (48km)
 - ▶ Airport Bus #800, #800-1
 - Travel Time 75 min. • Bus Fare KRW 5,000
 - ※ Bus Stop: **Seogwipo Post Office**
 - ▶ Airport Bus #600
 - Travel Time 110 min. • Bus Fare KRW 5,000
 - ※ Bus Stop: **Jeju World Cup Stadium**
- ② IUCN Leaders Forum venue, ICC JEJU ↔ Bareve Hotel (8.7km)
 - The shuttle service will be provided

Hotel Info ⑦

Bareve Hotel ★ ★ ★

Hotel Deluxe

Room Size: 28m² (Bed Room, Shower Booth)

Room Type	Occupancy	Special Rate (Including VAT)				
		Oct.12	Oct.13	Oct.14	Oct.15	Breakfast
Deluxe Double	2 people	KRW 70,000 / per night			KRW 19,000 / per person	
Deluxe Twin	Up to 3 people					
Ondol Double	Up to 3 people					

▶ Room Pictures



- Bed Type : 1 King bed



- Bed Type: 1 Double bed, 1 Single bed



- Bed Type: 1 Double bed, and Korean-style mattress
** Ondol Double

Hotel Info ⑦

Bareve Hotel ★★ ★

Hotel Deluxe

Room Size: 30.9m² (Bed Room, Shower Booth)

Room Type	Occupancy	Special Rate (Including VAT)				
		Oct.12	Oct.13	Oct.14	Oct.15	Breakfast
Premium Twin Ocean	Up to 4 people	KRW 85,000 up to 3 people / per night KRW 96,000 up to 4 people / per night			KRW 19,000 / per person	

▶ Room Pictures



- Bed Type : 1 Double bed, 1 Single bed

Cancellation policy

No	Category		Cancellation Policy
1	Parnas Hotel Jeju	★★★★★	By Oct. 4: No Penalty By Oct. 10: 20% of the room rate for the first night From Oct. 11: 100% of the room rate for the first night
2	Booyoung Hotel	★★★★	By Oct. 9: No Penalty By Oct. 10: 50% cancellation fee From Oct. 11: 100% cancellation fee
3	YOU US Hotel	★★★	By Oct. 4: No Penalty By Oct. 8: 50% cancellation fee From Oct. 9: 100% cancellation fee
4	Bloom Hotel	★★★	By Sep. 27: No Penalty By Sep. 30: 30% cancellation fee By Oct. 10: 50% cancellation fee From Oct. 11: 100% cancellation fee
5	Aria Hotel	★★★	By Sep. 27 : No Penalty From Sep. 28 : 100% cancellation fee
6	Bridge Residence Hotel	★★★	By Oct. 7 : No Penalty By Oct. 9 : 50% cancellation fee From Oct. 10: 100% cancellation fee
7	Bareve Hotel	★★★	By Oct. 4: No Penalty By Oct. 9 : 50% cancellation fee From Oct. 10: 100% cancellation fee