

# IUCN SSC Hawaiian Plant Specialist Group



## 2018 Report



Vickie Caraway



Lauren Weisenberger

### Co-Chairs

Vickie Caraway (1)  
Lauren Weisenberger (2)

### Red List Authority Coordinator

Matthew Keir (3)  
Maggie Sporck-Koehler

### Location/Affiliation

- (1) Department of Land and Natural Resources, U.S. Fish and Wildlife Service and State of Hawaii, Hawaii, US (Retired)  
(2) U.S. Fish and Wildlife Service, Honolulu, HI, US  
(3) State of Hawaii's Department of Land and Natural Resources, Division of Forestry and Wildlife, Hawaii, US

### Number of members

125



### Mission statement

The mission of the Hawaiian Plant Specialist Group (HPSG) is to prevent the extinction of native Hawaiian plants and provide for their recovery through a cooperatively administered off-site plant conservation system, in collaboration with on-site management partners to sample, propagate, and reintroduce rare plants; and to advance the preservation of native plants and their habitats through effective communication and public education.

### Projected impact for the 2017-2020 quadrennium

In 2018, the Lyon Arboretum Hawaiian Rare Plant Program (HRPP) and the Laukahi (both HPSG members with statewide missions) developed Species Actions Plans for 85 plant taxa, addressing: (1) revitalising aging *in vitro* collections or developing new protocols for long-term storage, (2) guidance for future collection and storage efforts for these taxa, (3) developing methods to share feedback on propagule collections between plant conservation agencies/organisations, (4) application of a provenance tracking system to facilitate communication between HRPP and collectors, (5) adoption of common standards for data sharing, (6) providing recommendations for a breeding programme to revitalise the conservation value of certain collections. HPSG was instrumental in the establishment of a network of Rare Plant

Facilities across the major islands of Hawaii. The mission of these facilities is to maintain and increase rare plant taxa for establishment back into appropriate habitats. In conjunction with these nurseries, HPSG established the Genetic Safety Net list, consisting of plants with 50 or fewer plants remaining in the wild. This list evolved into the Plant Extinction Prevention Program (PEPP), a statewide organisation that addresses conservation action for these critically rare plants. Our seed bank partnership has concentrated on collection of species for seed storage research. In conjunction with the USDA-ARS National Center for Genetic Resources Preservation, the partnership has provided a Best Practices Manual for genetic storage of Hawaiian plant propagules. Through this careful process, the Hawaii Seed Storage Initiative will become a model, world-class gene bank.

### Targets for the 2017-2020 quadrennium

#### Assess

Red List: complete Red List assessments of Plant Extinction Prevention species.

Research activities: number of guidelines developed.

#### Act

Technical advice: development of online Rare Plant Restoration Guideline based on workbook developed for the 2012 World Conservation Congress workshop held at Lyon Arboretum.

#### Communicate

Communication: participation in the 2020 World Conservation Congress.



Survey on Niihau Island  
Photo: Vickie Caraway

**Activities and results 2018**

**Assess**

**Red List**

i. In 2018, a total of 53 Hawaiian plants were assessed for the Red List, bringing the total assessment to 484 plants, approximately 35% of the Hawaiian flora. (KSR #1)

**Acknowledgements**

The Hawaiian Plant Specialist Group would like to send out mahalo to all of our members and partners, especially to the Laukahi network, Lyon Arboretum's Hawaiian Rare Plant Program, the Plant Extinction Prevention Program, National Tropical Botanical Gardens, the Hawaii Seed Bank Partnership, the State of Hawaii's Division of Forestry and Wildlife, and the U.S. Fish and Wildlife Service.

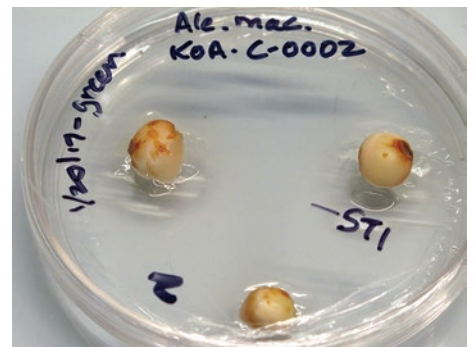
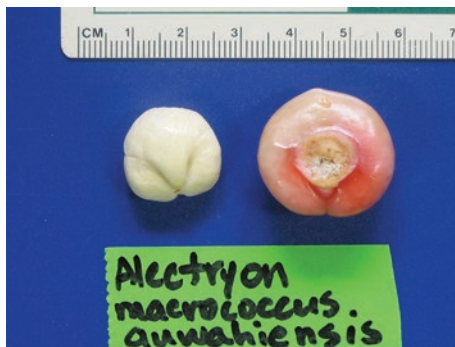
**Summary of activities 2018**

Species Conservation Cycle ratio: 1/5

Assess **1** |

Main KSRs addressed: 1

KSR: Key Species Result



*Alectryon macrococcus*, Critically Endangered  
Photos: HRPP, Lyon Arboretum