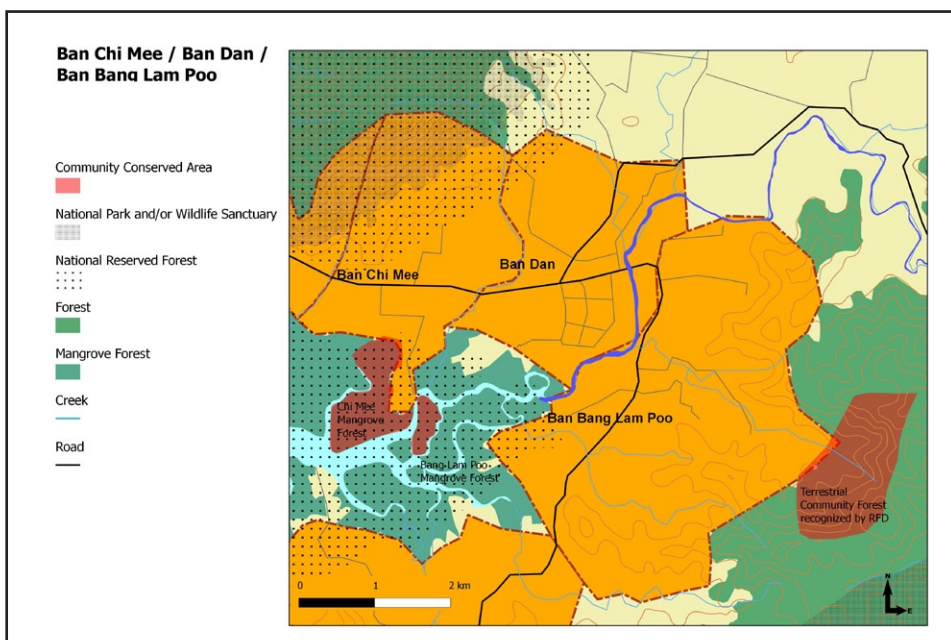


Ban Chi Mee, Ban Dan and Ban Bang Lam Poo

Conserving community mangroves in Kapoe estuary

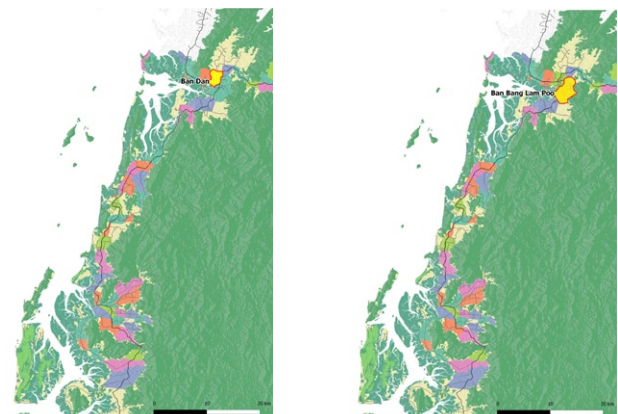
March 2010



Ban Chi Mee village is located in Kapoe District, Ranong Province. Since 2005 the villagers of Ban Chi Mee, Ban Dan and Ban Bang Lam Poo have been actively managing 686 rai of mangroves for the community to use.

The community that uses the mangroves made up of approximately 210 households from the three villages: Ban Chi Mee (150 households), Ban Dan (30 households), and Ban Bang Lam Poo (30 households). They use the resource for collecting fish, crabs, and they collect mangrove wood for household building use.

After the tsunami in 2005, these three villages decided to work together to conserve the mangroves because they noticed growing environmental problems and declining resources, including a series of charcoal concessions being granted by the government to private investors to cut down the mangroves.



Map 1. shows the community conserved areas, as well as protected areas under the National Park Act 1961, Wildlife Preservation and Protection Act 1992, and National Reserved Forest Act 1964.

COMMUNITY CONSERVED AREAS IN RANONG AND PHANG NGA PROVINCES, SOUTHERN THAILAND



Mangrove nursery. © IUCN/ Katie MILLER

They now see the main environmental problems facing the area as shrimp farming waste, waste from further upstream in the watershed, and climate change.

Community rules

The community have decided to apply rules to the mangrove area that they manage. These rules apply to villagers from all three villages, as well as outsiders that use the resource. The rules are:

- 1. Mangrove timber can only be used for household use. If you plan to cut down any trees, you must first inform the Head of the Village, or ask permission from the Department of Marine and Coastal Resources (DMCR) Mangrove Unit #9 directly.**
- 2. Many trees can not be cut from the same area.**
- 3. If you cut one tree, you must replant 5 trees in its place, with trees bought from the community mangrove nursery.**
- 4. Crab Bank - if you catch a small size crab you must give it to the crab bank to put into the crab conservation area. If you deposit 25 small crabs to the crab bank you will get 3 big crabs in return.**

The three villages have set up a committee called the Mangrove Rehabilitation Committee, which meets at least every 2 months. When important decisions are being made about the mangroves, for example in deciding or changing the community rules, they require at least 50 people to come to the meeting so that the voice of the whole community can be heard.

It is the responsibility of all villagers to make sure that the rules are obeyed. If they see someone breaking the rules, they should inform the Head of the Village or the Head of Committee. If the Head of the Village warns the offender, but they don't stop their activities, they will then report them to the Department of Marine and Coastal Resources (DMCR). If the offenders are outsiders (i.e. people from outside the

three villages), they are usually reported directly to the DMCR Mangrove Unit #9.

Several times a year the community does management activities, for example mangrove plantation days on father's and mother's day. The community participates very actively in these activities, and plantation days typically draw about 80% participation from the community.

Water quality is also measured for the whole Kapoe watershed three times a year, by the Kapoe Youth Group (participants from Ban Chi Mee, Ban Bang Lam Poo, Ban Dan, Ban Na).

The community also runs a mangrove nursery with ten varieties of mangroves. Seedlings are sold for five baht each and profits made from the nursery cover most of the mangrove management costs (petrol for boats, transport to network meetings etc). The community also manages a Nypa forest within the mangroves, where they plant and harvest Nypa to sell as thatching.

They have plans to start new economic initiatives, including a sustainable bamboo area, a mushroom farm and a ecotourism nature trail through the Khao Narai Mountain forest. In addition, they are developing three new species of mangroves, documenting their mangrove management plan, and working to establish a new mangrove curriculum in local schools.



Viroj Detsongpreak. © IUCN/ Katie MILLER

INTERNATIONAL UNION FOR CONSERVATION OF NATURE

For more information, please contact : Somsak Soonthornnawaphat Thailand Programme Manager IUCN-Asia Regional Office
Tel: +66 2 662 4029 (ext. 456) Fax: +66 2 662 4388 Mobile: +66 81 7544548 E-mail: Somsak.SOONTHORNNAWAPHAT@iucn.org
website: www.iucn.org/thailand

IUCN World Headquarters Rue Mauverney 28 1196 Gland Switzerland Tel: +41 22 999 0000 Fax: +41 22 999 0002 E-mail: mail@iucn.org
Website: www.iucn.org