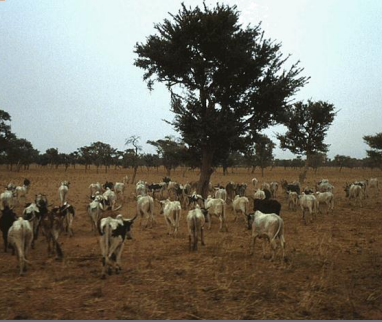
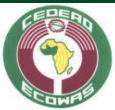


TerrAfrica Training



Sustainable Land Management Under Climate Change: Towards Sustainable Landscape

Ouagadougou, Burkina Faso, May 21-24, 2013



THE WORLD BANK



World Bank
Institute

Background

TerrAfrica is an African-led program that addresses land degradation in Africa by scaling up harmonized support for effective country-driven sustainable land and water management practices. Partners include 23 Sub-Saharan countries, the African Union, Regional Economic Communities, as well as development partners, like GEF, UNEP, FAO, EU, and the World Bank, as well as bilateral donors, and civil society. Partners collaborate on knowledge dissemination, coalition building and scaling up investments.

NEPAD (New Partnership for Africa's Development), which is leading TerrAfrica regional capacity building program, is collaborating with ECOWAS to hold a regional training on "Sustainable Land Management Under Climate Change: Towards Sustainable Landscape". in Ouagadougou, Burkina Faso, during May 21-24, 2013. The training receives technical support from CILSS (Permanent Inter-state Committee for Drought Control in the Sahel), through its training center - AgroHyMet (Center for Agronomy, Hydrology and Meteorology) - and the World Bank Institute (WBI, a capacity building arm of the World Bank). It is also in support for an upcoming regional knowledge program - BRICKS - *Building Resilience through Innovation, Communication, and Knowledge Services*. BRICKS is a part of Sahel and West Africa Program (SAWAP), supporting the Great Green Wall Initiative.

Desertification, land degradation and draught are major constraints for the economic and social development of countries in sub-Saharan Africa. These constraints are exacerbated by climate change. This is especially true for West-Africa, characterized by extensive drylands, and a strong dependency of their mainly rural populations on natural resources. It is among the regions most exposed to harmful consequences of climate change. However, evidence shows that sustainable land management (SLM) not only enhances agricultural productivity, builds climate change resilience, but also helps reduce climate change impact.

Learning Objectives

Share and disseminate good practices and approaches of SLM and resilience building to climate change; Facilitate building of a regional community of practices to promote SLM investment and planning.

Overview

The 4-day training, including one day field trip, is structured in five modules (agenda is attached).

1: Climate Change impact and perception

This module aims to reach common understanding of key concepts terminology about impacts of climate change. It presents sub-regional observation and projections on key

climate indicators, and highlights their impact on agriculture. It introduces climate smart agriculture

2: Climate-Smart Agriculture: Resilience for Food Security

This module introduces the concept of Climate-Smart Agriculture - from concepts to practical showcases, from within and outside the region. Using the showcases, it describes how CSA brings “triple-win” to food security, climate resilience and carbon sequestration.

3: Towards Landscape Management

This module uses case-method learning to illustrate sustainable landscape management approaches. Group learning shows how to break a vicious cycle of unsustainable land management and move towards a virtuous cycle of SML. It has a peer-to-peer learning session through knowledge market place. Hands-on computer lab work is included to demonstrate useful tools such as Google Earth for SLM reporting and monitoring.

4: Addressing Climate Mitigation through Carbon Sequestration

This module presents innovative cases from the region – how smallholder farmers have benefited from CSA and carbon market, and how bioenergy and livestock is an integral part of landscape management.

5: Building Regional SLM Capacity

This module focuses on the possibility of integrating CSA into the context of a regional program such as CADDP NIAPs and TerrAfrica.

Target Audience

Policy makers from ministries of agriculture, environment, water, forestry, planning and finance, SLM focal points under TerrAfrica, practitioners who are working on SLM programs.

Venue

Hotel Amiso, 198, av Mgr Thèvenoud; BP 1363, Ouagadougou
(+226) 50.30.86.77
(+226) 50.31.51.60

Contacts

ECOWAS - ZIDA Bertrand, obzida@yahoo.fr

NEPAD-KONE Bougadare-
bougadarek@nepad.org

WBI - Mei XIE (mxie@worldbank.org), Gerald KAPP (geraldkapp@worldbank.org)

	Day 1	Day 2	Day 3	Day 4
8:30 – 12:30	<p>Climate Change Impact and Perception</p> <ul style="list-style-type: none"> Overview of climate change & impact on agriculture: concepts & terminology. Local perceptions on climate change and observations from the region – implication for agriculture and land-water management <p>Climate-Smart Agriculture: Resilience for Food Security</p> <ul style="list-style-type: none"> Building climate-smart agriculture Regional showcase: Field results on productivity improvements 	<p>Towards Landscape Management</p> <ul style="list-style-type: none"> Watershed management for climate resilience, food security, and carbon sequestration <ul style="list-style-type: none"> - Breaking vicious cycle - Group work - Towards virtuous cycle Economics of resilience in the dry lands of Sub-Saharan Africa 	<p>Field Trip</p>	<p>Addressing Climate Mitigation Through Carbon Sequestration</p> <ul style="list-style-type: none"> Carbon finance – how small holder farmers benefit from it Carbon monitoring in climate smart agriculture projects Building climate resilience: integrating bio-energy into landscape management Livestock: an integral part of CSA Hand-on (computer lab): continue Google Earth for SLM project reporting
	LUNCH			
14:00 – 17:30	<ul style="list-style-type: none"> Conservation agriculture and evergreen agriculture – how has Zambia scaled it up Regional showcase: scaling up sustainable land management in the Sahel Hand-on (computer lab): using Google Earth for SLM project reporting 	<ul style="list-style-type: none"> Regional showcase: watershed management planning in the plateau zones of West Niger Link research with farmers: overcome the last kilometer hurdle Working group: knowledge sharing on best SLM practices 	<p>Field Trip</p>	<p>Building SLM Knowledge Base</p> <ul style="list-style-type: none"> Knowledge market place Integrating CSA into CADDP NIAPs Building regional knowledge base from regional programs of TerrAfrica