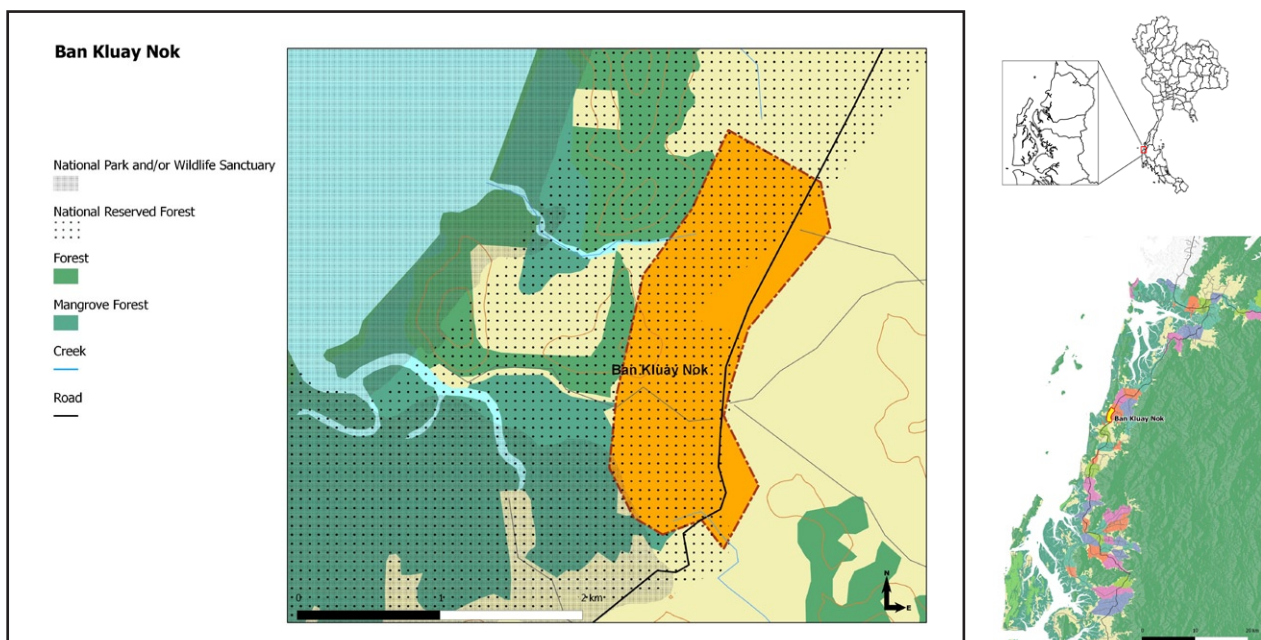


# Ban Kluay Nok

## Conserving community mangroves

March 2010



The Ban Kluay Nok community has been accessing and using a 365 rai area of mangroves since 1996. It is located partly within Laem Sok National Park.

Since 2005 the community has more actively managed the mangrove area for sustainable use and conservation. They became increasingly concerned by the growing environmental problems they noticed in their area: erosion around the mangrove trees, increasing oil palm and rubber plantations in the area, shrimp farming, and tourist resorts.

Ban Kluay Nok villagers realized the importance of the mangroves in supporting livelihoods and providing materials for the community: seashells, fish, crabs, herbs, and mangrove wood for household building use. The mangrove area is only used by the 260 households of Ban Kluay Nok, not by people from outside the village, and this makes it easier to take strong conservation actions.

**Map 1. shows the village of Ban Kluay Nok, as well as protected areas under the National Park Act 1961, Wildlife Preservation and Protection Act 1992, and National Reserved Forest Act 1964.**

There are several management activities within the Ban Kluay Nok community, and these are documented in a management plan. They include: mangrove plantation and rehabilitation activities (about 3 times a year); mangrove nursery; nypa planting; releasing animals (snapper, shrimp); and building fish homes. The community participates actively in management of the mangroves, with about 60% of villagers regularly taking part in activities.

Ban Kluay Nok have received GPS training from Thailand Environment Institute and the Royal Forest Department. Most recently, it was members of the Ban Kluay Nok Mangrove Forest Committee members that were trained, but any villager who is interested can volunteer to attend the training.

### Community Rules

The Ban Kluay Nok community has developed specific rules that apply to the mangrove area:

- 1. It is prohibited to seize any area of mangrove forest for oneself**
- 2. It is prohibited to cut down mangrove trees, except where the Mangrove approvals from Mangrove Forest Committee are made.**
- 3. If anyone cuts mangrove trees without informing the Committee, the following action will be taken:**

**First offence - verbal warning or arrest by DMCR or any responsible forestry unit**

**Second offence - fined between 50-500 baht and must replant 5 new trees for every 1 tree cut**

The Ban Kluay Nok Mangrove Forest Committee decides the community rules. There are 24 members on this Committee, elected by the villagers, and they meet once a month. However, for important meetings such as when the Committee is elected, or when decisions are made about the community rules, at least 50% of Ban Kluay Nok villagers must attend the meeting.

While it is everyone's responsibility to enforce the rules, there is also a patrol, drawn from Mangrove Forest Committee members, that goes out once a month to check no trees have been cut down. There have been no reported violations of the rules since 2004.

For the future, the villagers of Ban Kluay Nok would like to get more information about mangrove management, and some money to build a walkway to take local school children and youth groups into the mangroves, teaching about their precious resource.



Mangrove rehabilitation.  
© IUCN/ Somsak SOONTHORNNAWAPHAT



Mangrove rehabilitation.  
© IUCN/ Somsak SOONTHORNNAWAPHAT