



# Operation of Rila National Park

Grazing schemes in  
the management plan  
and EU subsidies



# Rila National Park

## Some basic information

- ▶ Established – 24<sup>th</sup> February 1992

The largest National park in Bulgaria

- ▶ area – 81046 hectares
- ▶ forests – 53481 hectares
- ▶ alpine pastures and meadows – 27565 hectares
- ▶ reserves – 16222,1 hectares (20% of the park territory)
- ▶ 90% natural ecosystems
- ▶ NATURA 2000 site - SPA and SCI







# Rila National Park

## Some basic information



- ▶ More than 100 mountain peaks above 2000 meters a.s.l.
- ▶ More than 120 glacier lakes
- ▶ Water source for more than 3 000 000 people



# Rila National Park

## Some basic information



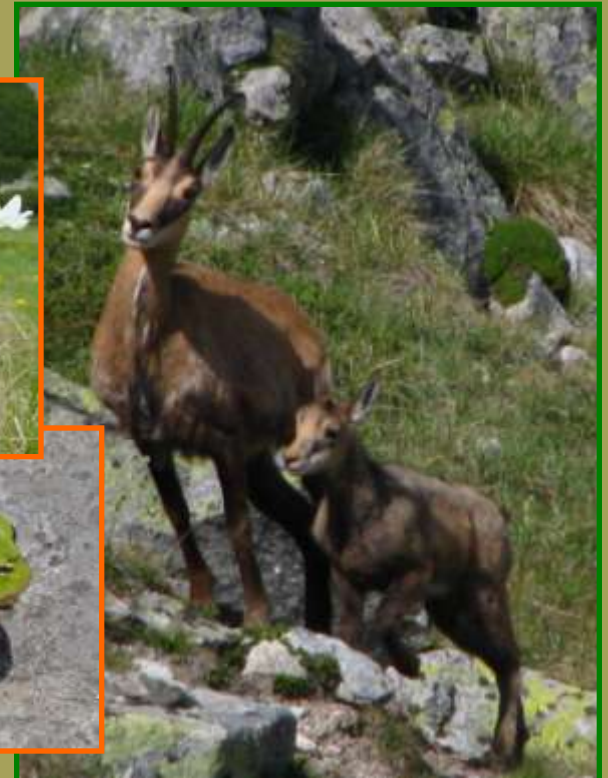
### Flora

- ▶ 1 400 species of higher plants;
- ▶ 282 moss species;
- ▶ 130 freshwater algae species



### Fauna

- ▶ More than 3000 species of invertebrates
- ▶ 172 species of vertebrates;
  - ▶ Amphibians and reptiles – 20 species
  - ▶ Birds– 99 species
  - ▶ Mammals – 48 species



# Rila National Park

## Some basic information



PARK DIRECTORATE – established in 1999

- ▶ One central office – Blagoevgrad
- ▶ Nine local park offices
- ▶ General administration personnel – 8 persons
- ▶ Specialized administration personnel – 70 of who:
  - ▶ Security and control department – 61 persons
  - ▶ Monitoring and resource management - 6 persons
  - ▶ Interpretation and education programs – 3 persons
- ▶ Total staff - 78





# Rila National Park

## Some basic information

### Main responsibilities of park rangers

- ▶ Guarding and control
- ▶ Monitoring
- ▶ Communicating with stakeholders and visitors. Interpretation



## Grazing on the territory of the park

### Rules:

- ▶ Certain localities
- ▶ Certain animals
- ▶ Rules for Sheppard dogs, shelters and trails used by the herds
- ▶ Number of animals

/1,2 ha per cattle or 0,4 ha per cattle/

/0,4 ha per sheep or 0,1 ha per sheep/





## EU subsidies in grazing contribute to:

- ▶ Increase of grazing which is traditional practice in our high mountains
- ▶ Preserving and maintaining of high mountain grasslands – home of many endangered and protected species
- ▶ Increased the income of part of the local population



- ▶ Lack of clear and strict rules



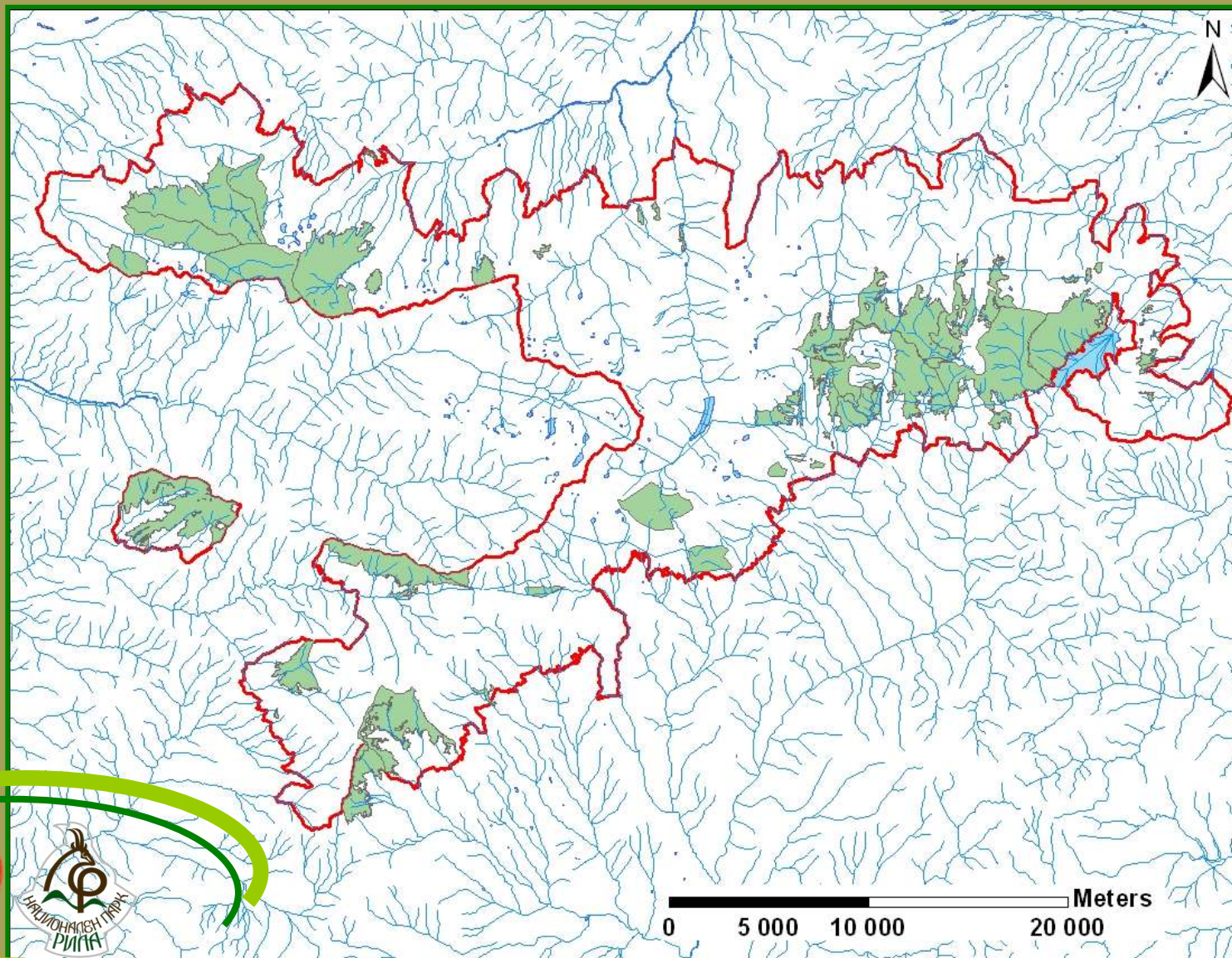
## And inevitably some problems...

- ▶ Lack of good coordination and cooperation among the responsible institutions





## Grazing on the Park territory

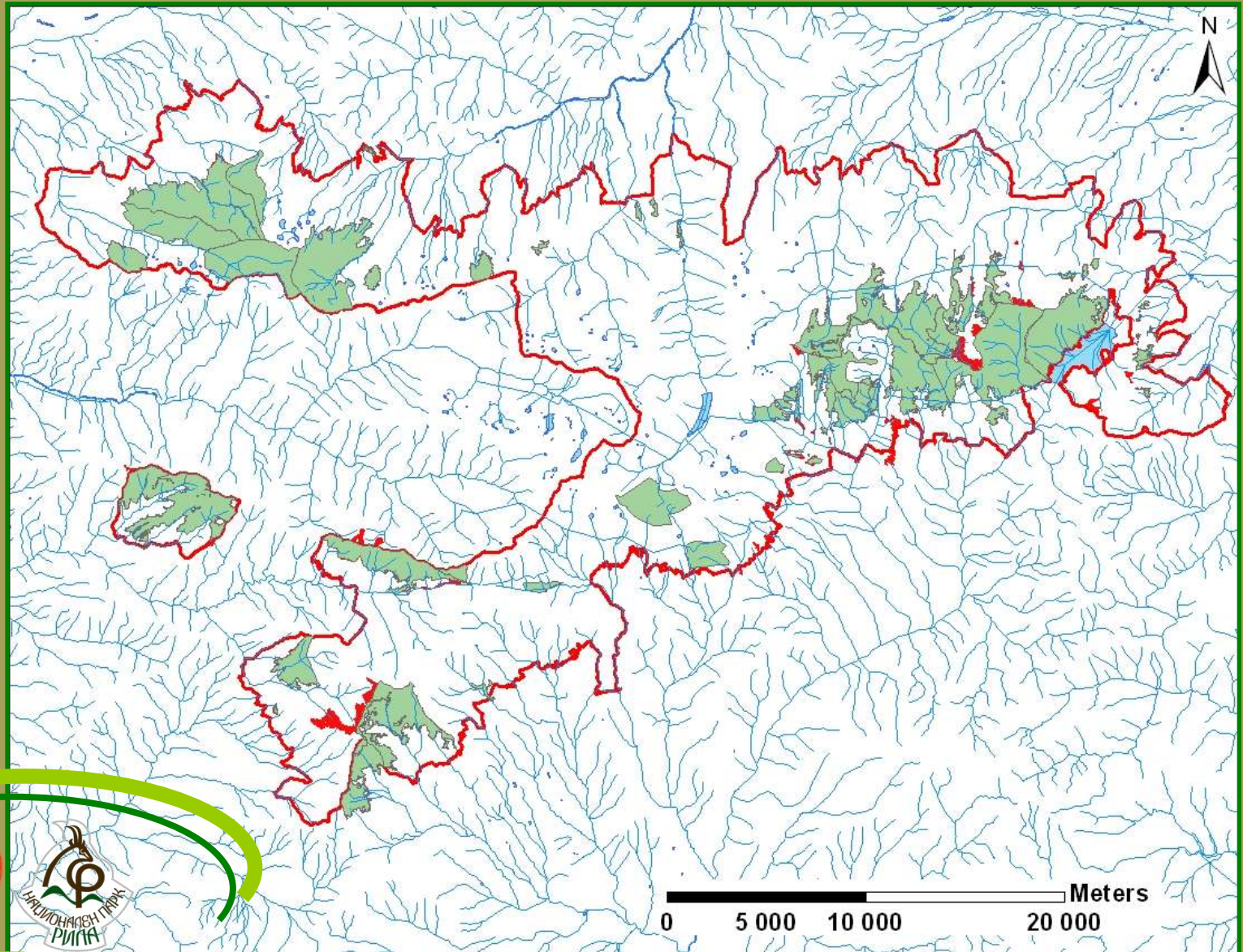




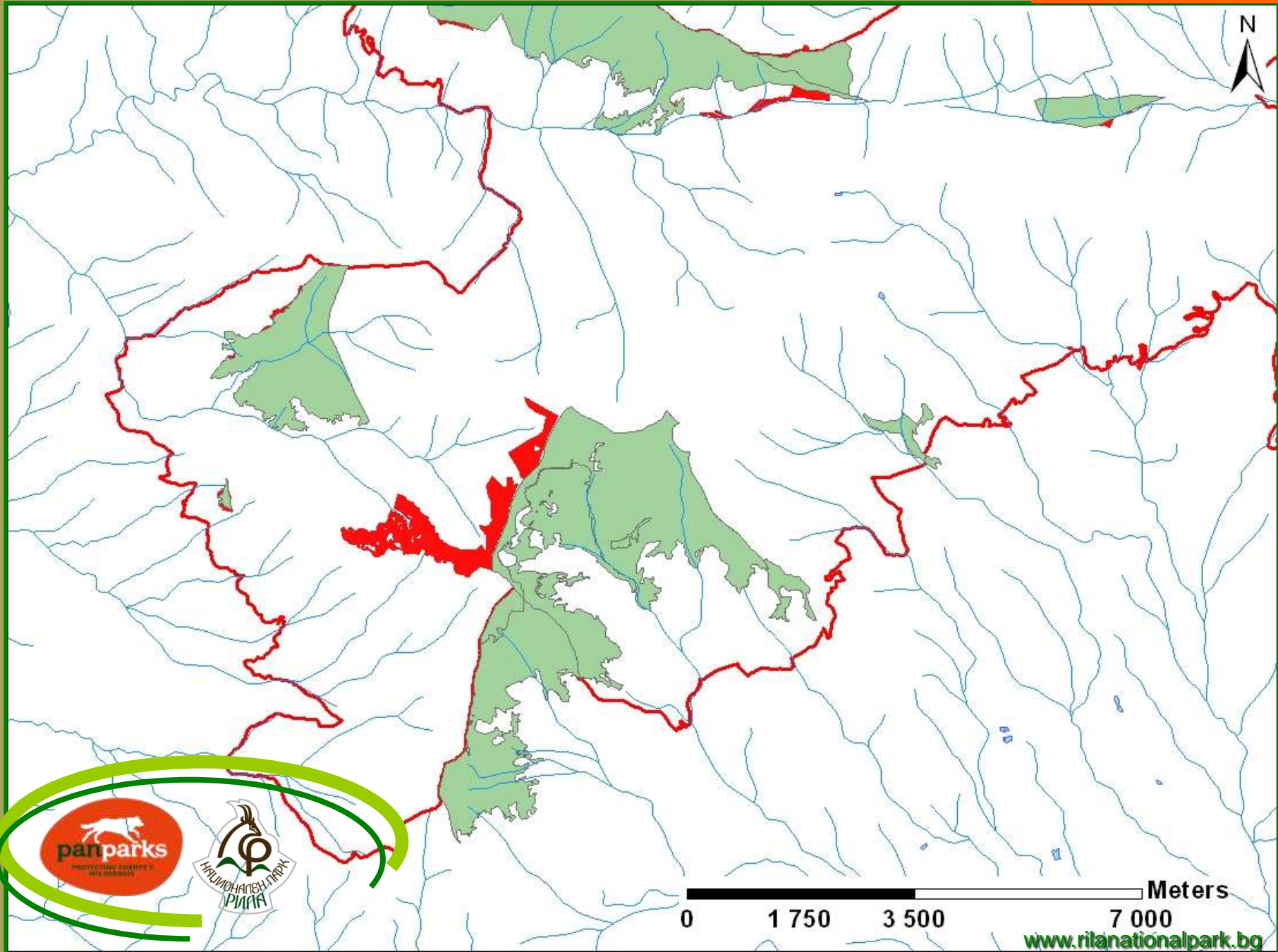




## Grazing and EU subsidies







N

pan parks

Национален парк  
РИЛИЯ

0 1 750 3 500 7 000 Meters

www.rilainationalpark.bg



Thank you for  
the attention

