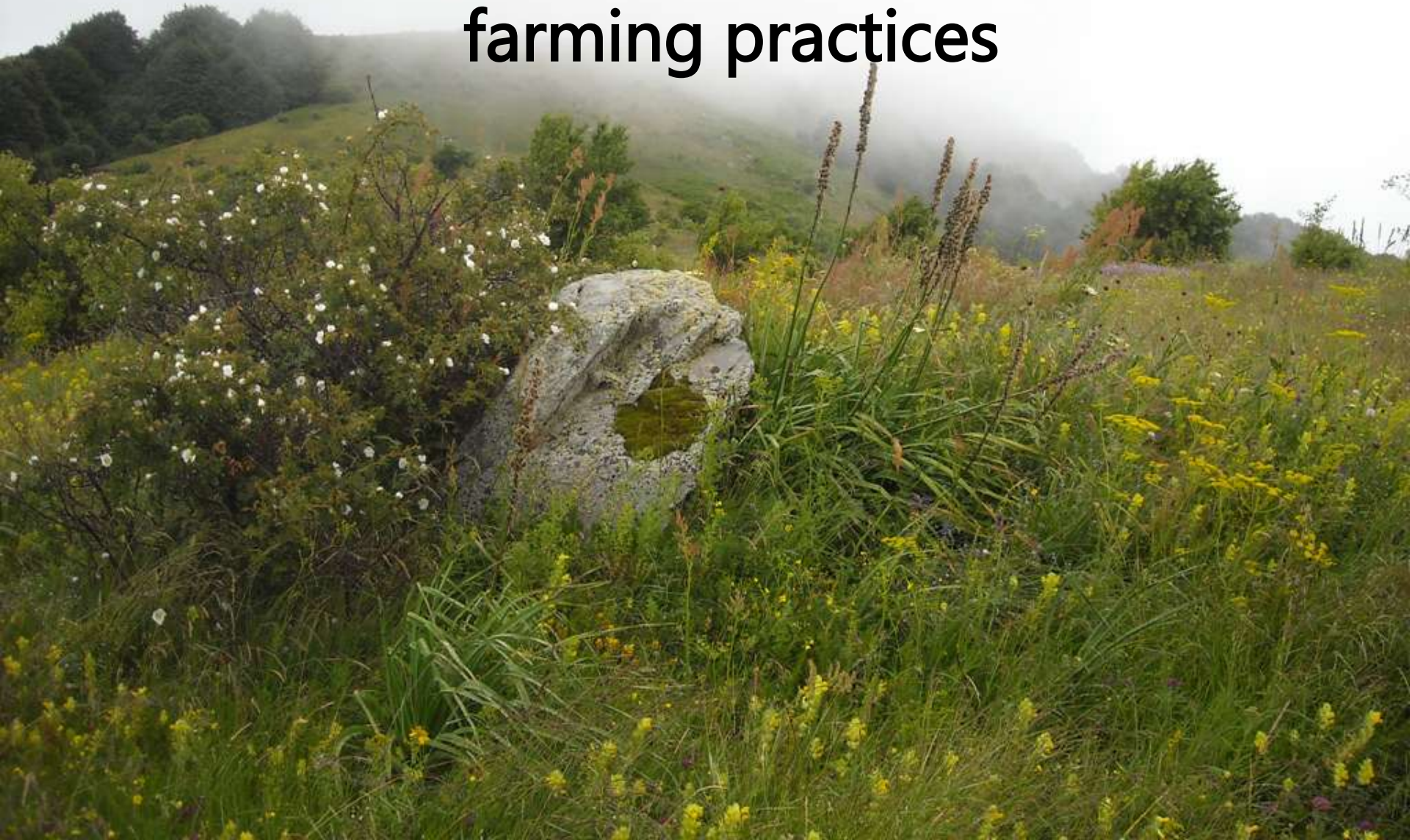


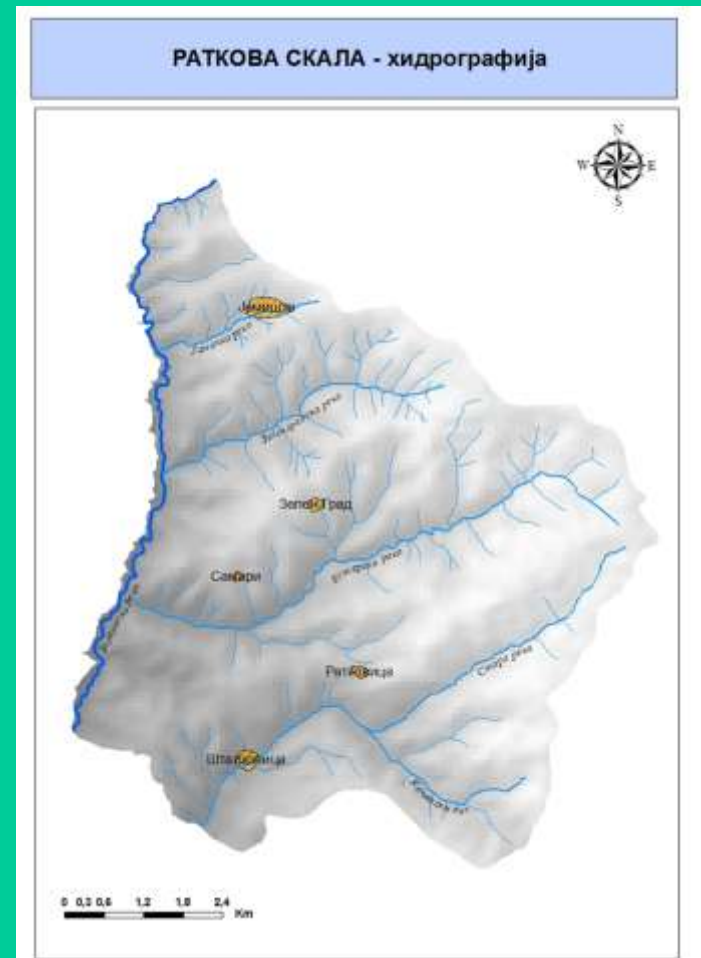
- **Ratkova Skala and traditional farming practices**



General info on the region

- Located in the Osogovo mountains
- 11500ha
- Important villages: Stalkovica, Ratkovica, Zelen Grad, Jamiste
- Rivers: Stara Reka, Esterska Reka, Venecka Reka etc
- Mountain tops range from 698m –Pisanik to 1669 Panagjur

- Waterfalls, caves and
- high rocks
- Warm and dry climate
- in summer months
- leads to drying and fast
- reduction of grasslands,
- yet fair amount of pastures
- In winter livestock is fed
- with meadow hay



Biodiversity

- Biodiversity in rivers, riversides, grasslands, forests, mountains
- The area is rich with unexplored algae, moss, fungi, etc.
- Flora (important representatives like salep-orchid) and fauna
- Endangered species

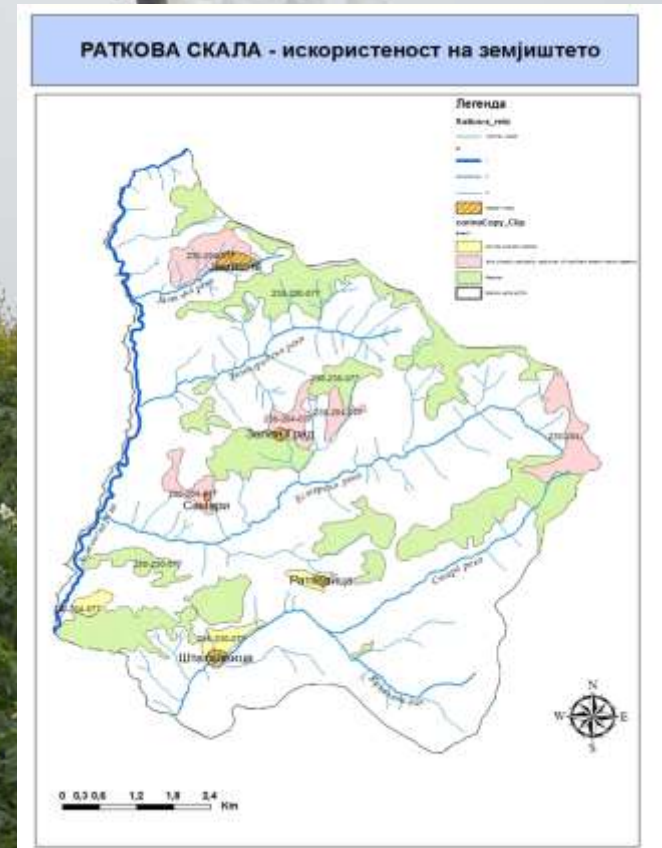
Agriculture

- Republic of Macedonia's spatial planning has designated this area for extensive agriculture, livestock, forestry and important eco zones in the Eastern region.
- Traditional extensive agriculture –raising beans and potato mostly

HNV farming

- Mosaic configuration
- of cultivable soils
- and orchards etc.

- Less or no land
- processing



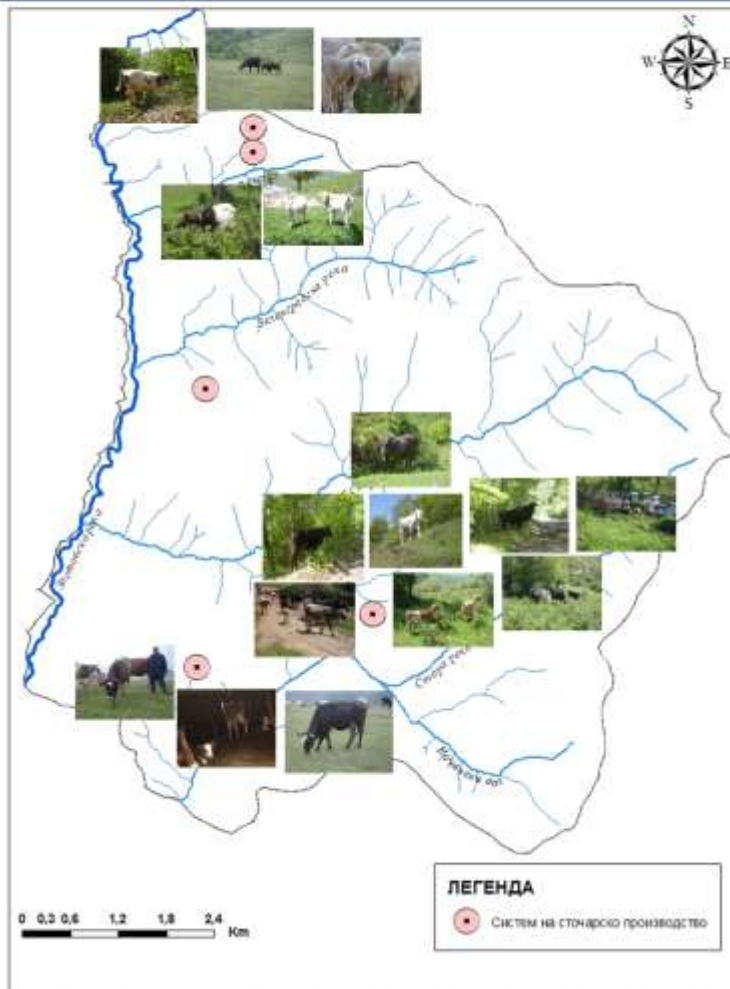
- Identification of pastures and types of pastures, dangers of non using



Livestock

- Mostly cows, also goats
- Local types of livestock –bela sanska goats, busha, etc.

РАТКОВА СКАЛА - систем на сточарско производство



Farmers

- Farmers' profiles – land , livestock, HNV type



- Thank you 😊